

Road Map



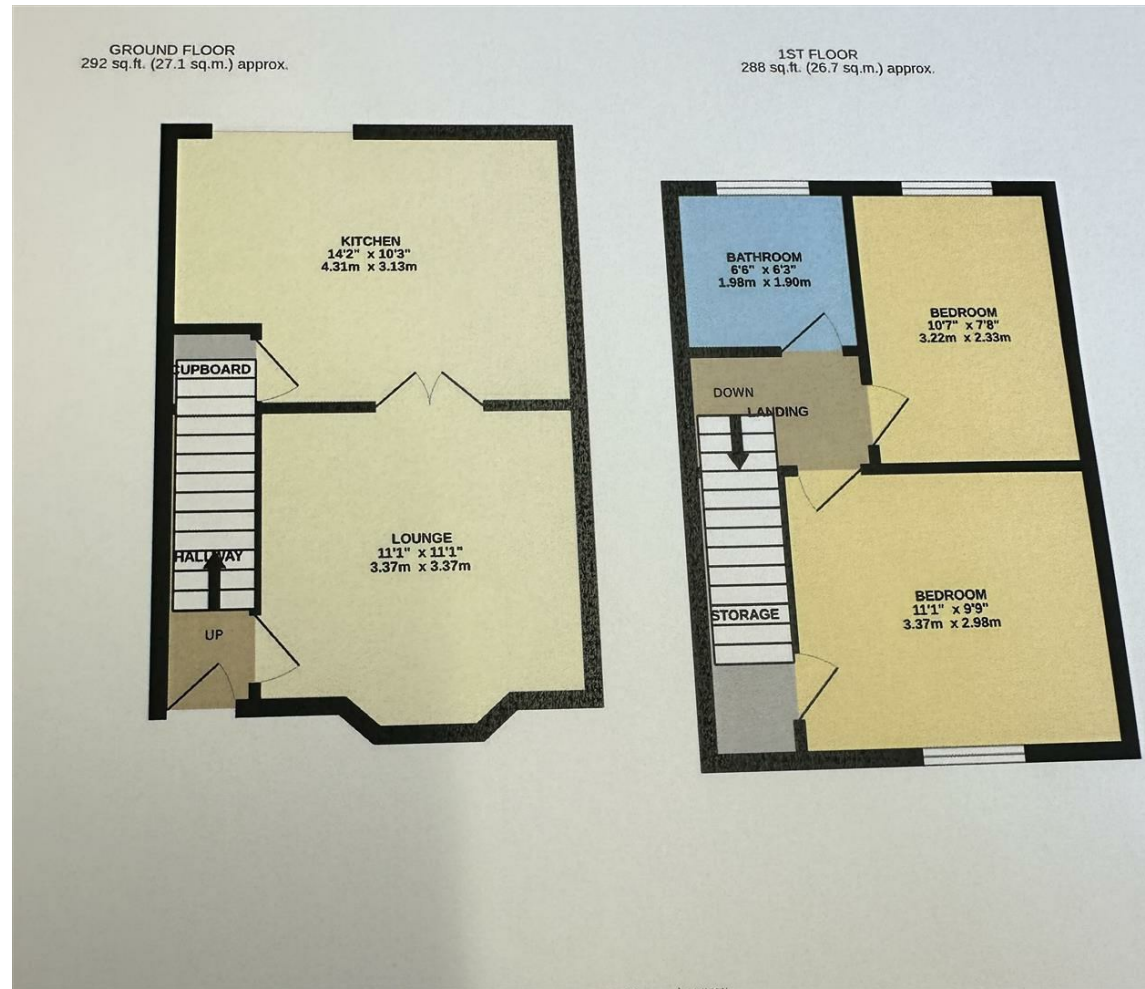
Hybrid Map



Terrain Map



Floor Plan



29 Dunster Place

Holbrooks, Coventry CV6 4JD

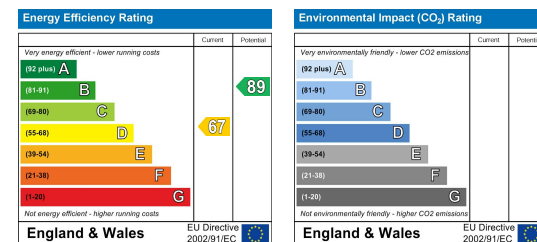
Offers Over £175,000



Viewing

Please contact us on 02477 170170 if you wish to arrange a viewing appointment for this property or require further information.

Energy Efficiency Graph



These particulars, whilst believed to be accurate are set out as a general outline only for guidance and do not constitute any part of an offer or contract. Intending purchasers should not rely on them as statements of representation of fact, but must satisfy themselves by inspection or otherwise as to their accuracy. No person in this firm's employment has the authority to make or give any representation or warranty in respect of the property.

CONTACT INFORMATION

24a Warwick Row, Coventry CV1 1EY
02477 170170

info@matthewjames.uk.com
www.matthewjames.uk.com

Facebook
Twitter



29 Dunster Place

Holbrooks, Coventry CV6 4JD

Offers Over £175,000



Front Approach

Entrance Hall

Living Room

36'1"3'3" x 36'1"3'3"

Kitchen

14'2 x 10'3

Bathroom

6'86'3

Bedroom one

11'1 x 9'9

Bedroom Two

10'7 x 7'8

Rear Garden

